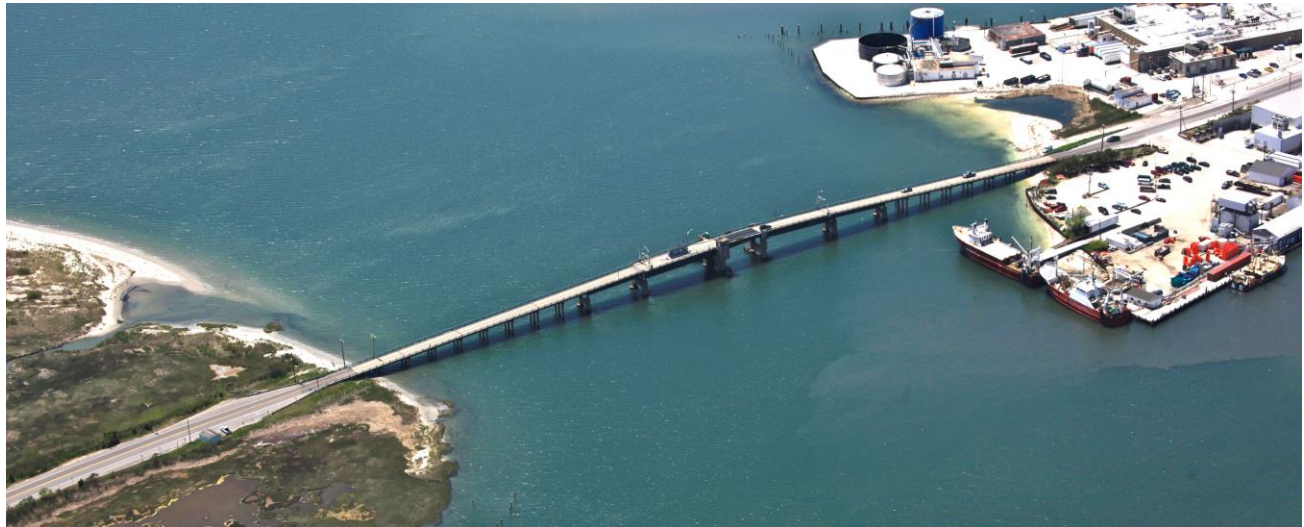




Ocean Drive (CR 621) Upgrades & Bridge Improvements Local Concept Development Study Township of Lower, Cape May County



PROJECT INFORMATION



The South Jersey Transportation Planning Organization (SJTPO), in conjunction with Cape May County and NJ Department of Transportation, is undertaking a Local Concept Development (LCD) Study for proposed roadway upgrades and bridge improvements along the Ocean Drive (CR 621) causeway in Lower Township, Cape May County. The purpose of the LCD is to evaluate prudent and feasible alternatives allowing for a selection of a Preliminary Preferred Alternative (PPA).

Ocean Drive links the communities of Cape May and the Wildwoods (the Cities of Wildwood and North Wildwood, Wildwood Crest and West Wildwood Boroughs, and Diamond Beach, Lower Township). It is a designated emergency coastal evacuation route for the Wildwoods. The causeway consists of a 2.7-mile stretch of roadway extending from NJ Route 109 on the mainland to Madison Avenue in Diamond Beach, including three bridges traversing Mill Creek, Upper Thorofare, and Middle Thorofare.

The three bridges were built in 1939 and are beyond their serviceable life at over 75 years old. Also, due to the overall condition of the Middle Thorofare Bridge, heavy truck traffic is prohibited (load posted at 15 tons). The bridges are currently safe to travel on, however, without significant on-going structural maintenance, the bridges may require a more restrictive load posting (further restrictions on the type and weight of vehicles allowed to use the bridge) due to the continued deterioration.

Portions of Ocean Drive are below the 100-year flood elevation, and prone to occasional flooding, becoming impassible in a hurricane or significant storm event. Much of the roadbed was constructed at an elevation of 7.5' on fill in 1940 and has settled to an approximate elevation of 6', well below a 100-year flood elevation of 11' as depicted on Flood Insurance Rate Maps released by the Federal Emergency Management Agency (FEMA) in 2017.

The Proposed Study:

The current phase of this project is Local Concept Development (LCD). During this phase a well-defined and well-justified Purpose and Need Statement will be developed. The LCD Phase elements also include data collection; coordination with the Federal Highway Administration (FHWA), local municipal officials,





Ocean Drive (CR 621) Upgrades & Bridge Improvements Local Concept Development Study Township of Lower, Cape May County



community stakeholders, permitting agencies; and the development of a reasonable number of sensible and practical conceptual alternatives, culminating in a recommended Preliminary Preferred Alternative. The study process will include environmental, right of way, access, utilities, design, community involvement, constructability, and cost.

The primary tasks of stakeholders and members of the public are to provide community input to assist in the development of the Project Purpose and Need Statement, assist in the development of conceptual alternatives, identify possible fatal flaws, and to assist in the development of a recommended Preliminary Preferred Alternative based on the Project Purpose and Need.

Local Concept Development Project Schedule (Major Milestones)

Finalize Project Purpose and Need Statement	Spring 2018
Development of Conceptual Alternatives	Spring/Summer 2018
Recommended Preliminary Preferred Alternative	Fall 2018
Obtain Resolutions of Support for Preliminary Preferred Alternative	Winter 2018/2019
Completion of Local Concept Development Phase	Spring 2019

Anticipated Community Involvement Schedule

Community Stakeholders Meeting for Purpose & Need Statement Development	Spring 2018
Public Information Center for Purpose and Need Statement Development	Spring 2018
Local Officials Meeting for Input on Developed Alternatives	Summer 2018
Community Stakeholders Meeting for Input on Developed Alternatives	Summer 2018
Public Information Center for Input on Developed Alternatives	Summer 2018
Local Officials Meeting for Preliminary Preferred Alternative Recommendation	Fall 2018
Community Stakeholders Meeting Presentation of Preliminary Preferred Alternative	Fall 2018
Public Information Center Presentation of Preliminary Preferred Alternative	Fall 2018

Contact Information

Dale M. Foster, P.E.
Cape May County Project Manager
(609) 465-1035
countyengineer@co.cape-may.nj.us

